

GAZZDA

---

# Nora Bar & Counter Chairs

Product sheet

design by  
Mustafa Čohadžić



# Nora Bar & Counter Chairs

## Product facts

### Materials

---

Body	Solid oak
Backrest	Oak veneer
Finish	Hardwax oil / lacquered
Seat	Oak veneer / leather or fabric upholstery

### Technical features

---

#### Body

Nora's body is made out of solid wood, while the bent backrest is made out of thin veneer slices of high-quality oak. Chair elements are connected with characteristic and visible wedged mortise and tenon joints. Plastic gliders are attached to the chair legs and are suitable for most flooring options. The seat is connected to the body through black seat spacers, while the backrest is attached to the chair legs with black powder-coated spacers.

#### Seat

Three material options for a seat are available: as a form-pressed veneer seat or as leather or fabric upholstered options. For further information please see Available materials page in this document.

#### Finish

Available in three plant-based Hardwax oil finishes (colors), which retain the wood's natural state (white, natural and smoked oil) or as a black lacquered option.

#### Cleaning

Please see [Product](#) or [Material](#) page on our website.

### Standards and certifications

---

Nora Bar Chair fulfills the requirements of standard BAS EN 16139:2014 + BAS EN 16139/Cor1:2014 Furniture - Strength, durability and safety - Requirements for non-domestic seating.

### Notes to consider

---

#### Variations

Natural variations in wood color and surface may occur. Regular maintenance will ensure the wood preserves its authentic beauty and can last for generations.

#### Product changes

Please note that Gazzda reserves the right to alter construction and design without notice.

#### Dimensions (tolerances)

The dimensions shown are indicative, they may vary due to the natural properties of wood, season, or manufacturing processes. Deviations from the specified size may occur, usually no more than 1 cm.

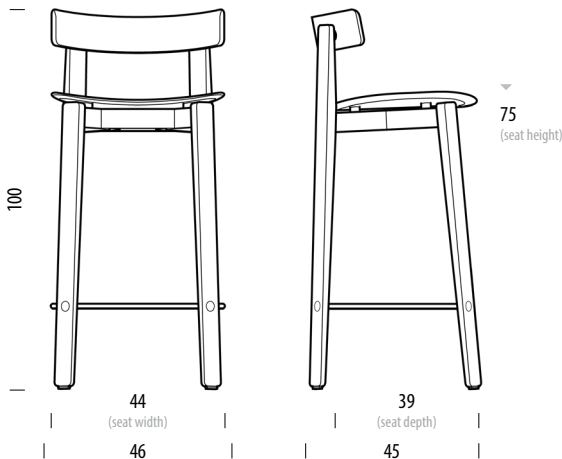
For all additional inquiries regarding Nora Bar & Counter Chairs please feel free to [contact us](#).

# Nora Bar Chair

Base Solid Oak, Backrest Oak veneer, Seat Upholstered / Oak veneer

## Basic info

Design	Mustafa Čohadžić
Product size	W: 46, D: 45, H: 100
Packaging	W: 52, D: 47, H: 106
Volume	0,26 m <sup>3</sup>
Net weight	7,7 kg
Gross weight	10,1 kg



Item no. 185 / 1CE		Assembled product	
Dimensions	Width	Depth	Height
Seat	44	39	75

# Nora Bar Stool

Base Solid oak, Seat Upholstered / Oak veneer

## Basic info

**Design** Mustafa Čohadžić

**Product size** W: 46, D: 45, H: 100

**Packaging** W: 52, D: 47, H: 106

**Volume** 0,26 m<sup>3</sup>

**Net weight** 7,7 kg

**Gross weight** 10,1 kg



Item no. 187 / 1D0

Assembled product

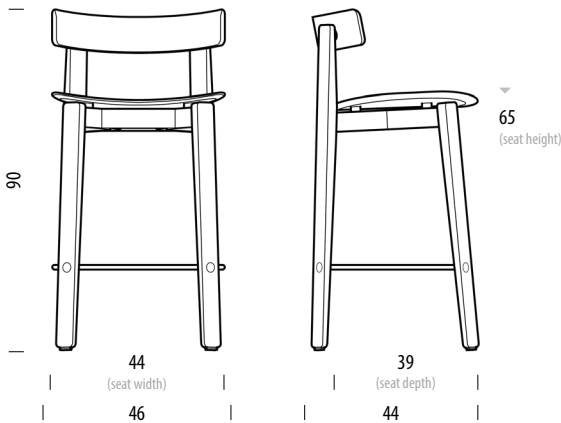
Dimensions	Width	Depth	Height
Seat	44	36	75

# Nora Counter Chair

Base Solid Oak, Backrest Oak veneer, Seat Upholstered / Oak veneer

## Basic info

Design	Mustafa Čohadžić
Product size	W: 46, D: 44, H: 90
Packaging	W: 52, D: 47, H: 106
Volume	0,26 m <sup>3</sup>
Net weight	7,2 kg
Gross weight	9,6 kg



Item no. 186 / 1CD

Assembled product

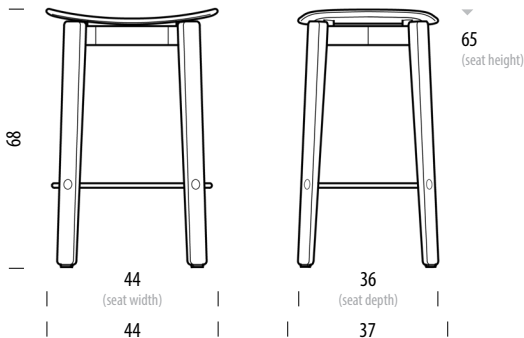
Dimensions	Width	Depth	Height
Seat	44	39	65

# Nora Counter Stool

Base Solid oak, Seat Upholstered / Oak veneer

Basic info

Design	Mustafa Čohadžić
Product size	W: 44, D: 37, H: 68
Packaging	W: 51, D: 49, H: 89
Volume	0,22 m³
Net weight	5,7 kg
Gross weight	8,1 kg



Item no. 188 / 1CF		Assembled product	
Dimensions	Width	Depth	Height
Seat	44	36	65

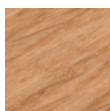
# Nora Bar & Counter Chairs

## Available materials

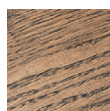
### Base, seat and backrest | Oak



Oiled  
1015  
White oil



Oiled  
1505  
Natural oil



Oiled  
163  
Smoked oil



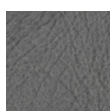
Lacquered  
RAL 9005  
Black

### Upholstered seat | Leather

#### Dakar - by Leder Reinhard



0500  
Black



1258  
Grey



1436  
Stone



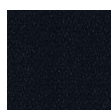
3411  
Nature



2732  
Whisky

### Upholstered seat | Fabric

#### Era - by Camira



CSE14  
Forward



CSE13  
Present



CSE45  
Prompt



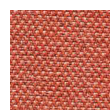
CSE42  
Range



CSE20  
Aeon



CSE16  
Timelapse



CSE26  
Turn



CSE03  
Lifetime

#### Main line flax - by Camira



MLF16  
Temple



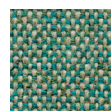
MLF20  
Upminster



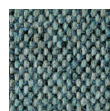
MLF02  
Archway



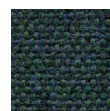
MLF10  
Newbury



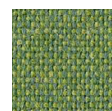
MLF24  
Bayswater



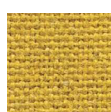
MLF22  
Westminster



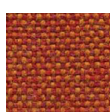
MLF32  
Greenford



MLF18  
Tufnell



MLF17  
Tooting

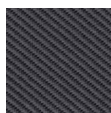


MLF13  
Leyton

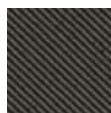
# Nora Bar & Counter Chairs

## Available materials

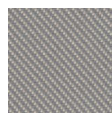
### Relate - by Kvadrat



0171



0181



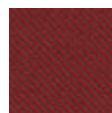
0111



0771



0961

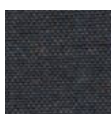


0671



0431

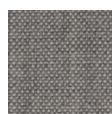
### Remix - by Kvadrat



0753



0163



0123



0823



0912



0933



0612

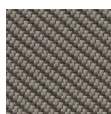
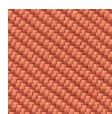


0632

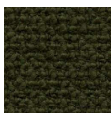
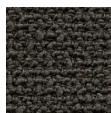
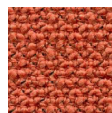
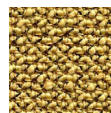


0762

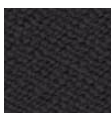
### Oceanic - by Camira

OOC01  
FlotsamOOC08  
BayOOC14  
RiptideOOC13  
PaddleOOC11  
NeptuneOOC05  
CoralOOC07  
Barrier

### Yoredale - by Camira

UDA08  
GayleUDA25  
LeyburnUDA17  
RibbleUDA04  
HardrawUDA02  
KidstoneUDA03  
AskriggUDA05  
Simonstone

### Vidar - by Kvadrat



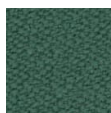
0182



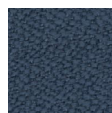
0133



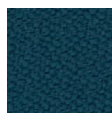
0222



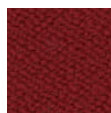
0943



0733



0872



0582



0472